

FORMEN DER

FAKTORVARIATION (FV)

1. totale FV
2. partielle FV
3. isoquante FV
4. isokline FV

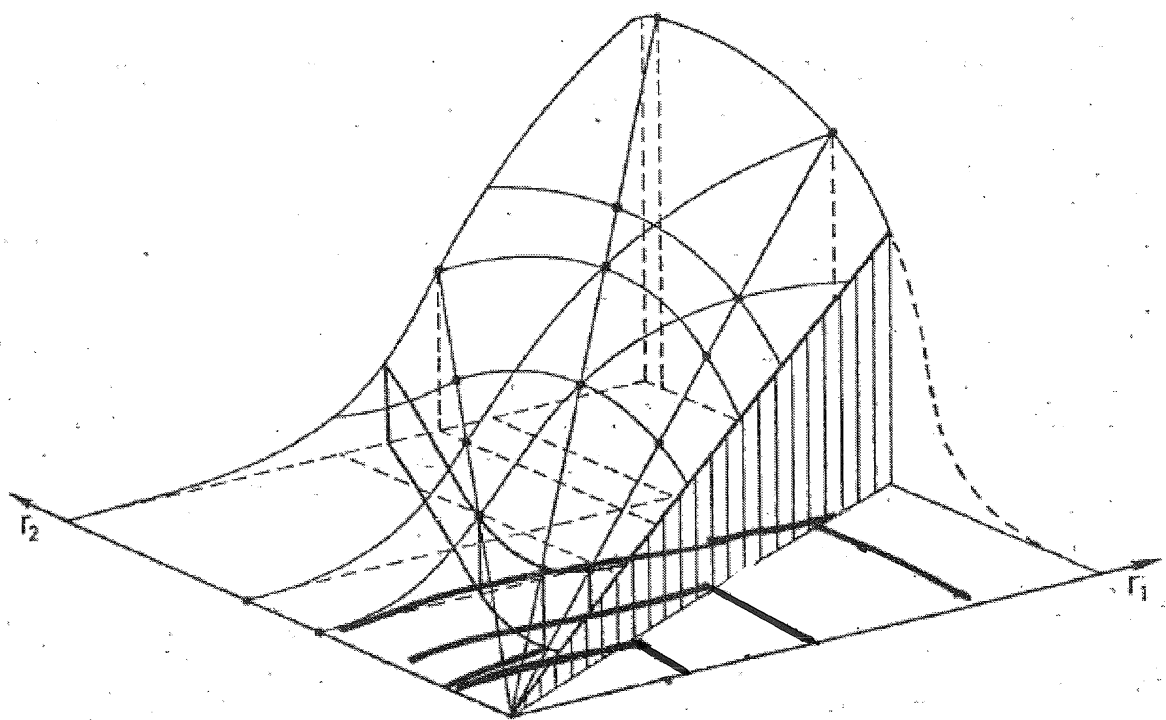


Abb. 35: Ertragsgebirge-Ausschnitt: totale Faktorvariation

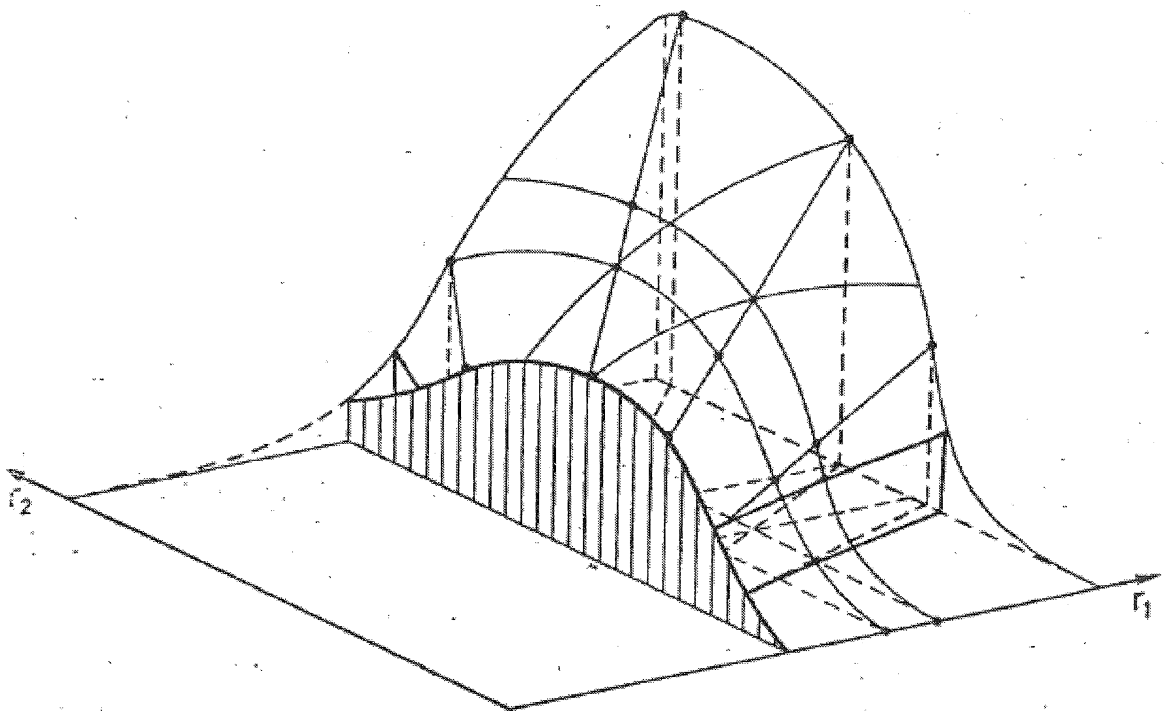


Abb. 34: Ertragsgebirge-Ausschnitt: partielle Faktorvariation

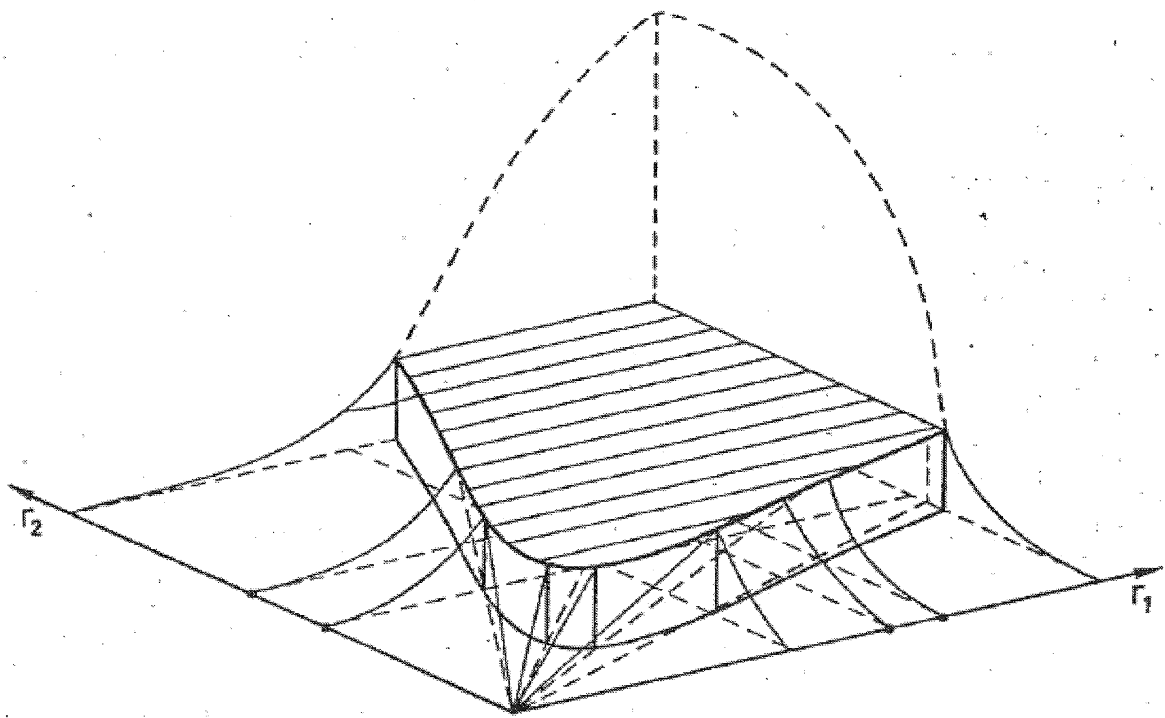


Abb. 36: Ertragsgebirge-Ausschnitt: isoquante Faktorvariation

# ELLINGER/HAUPT

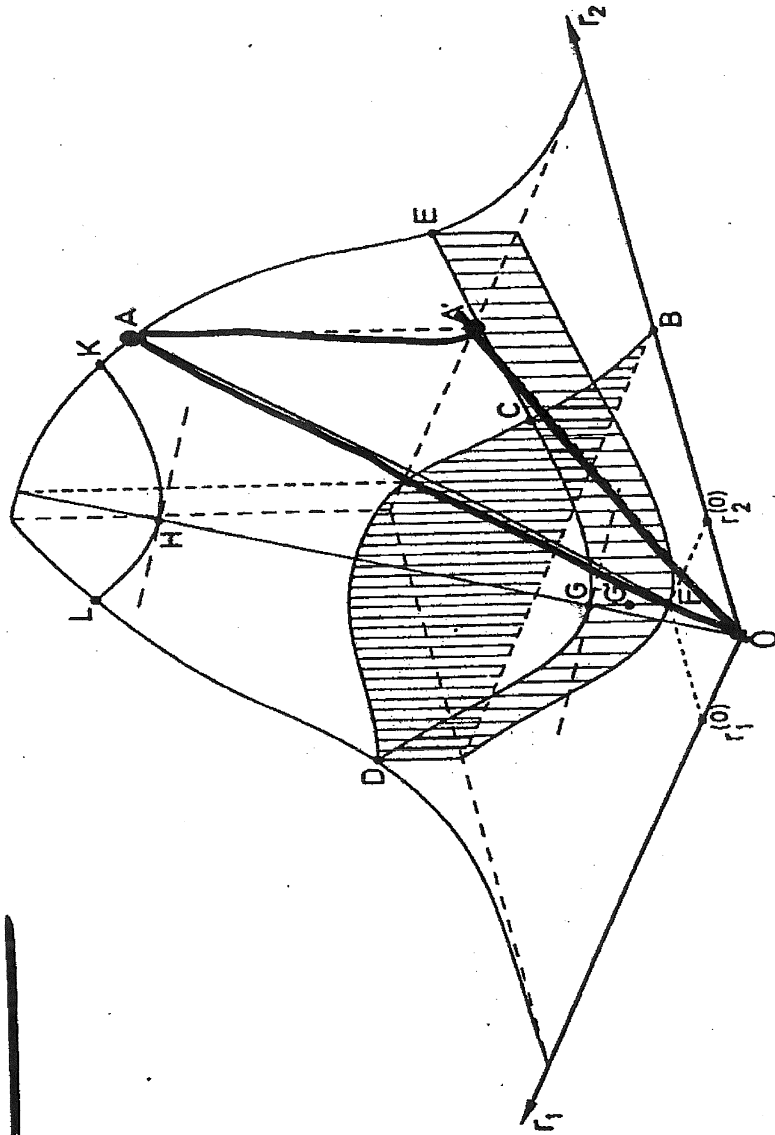


Abb. 2: 3-dimensionale Darstellung der Produktionsfunktion  $x(r_1, r_2)$



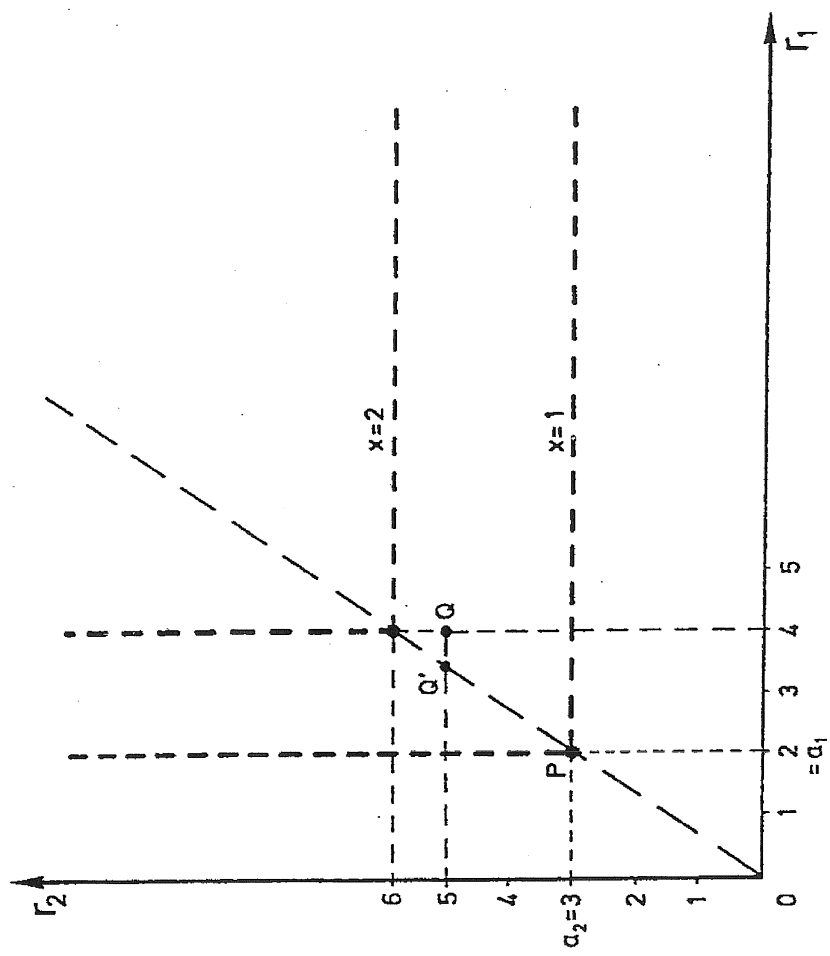


Abb. 15: Lineare Limitationalität

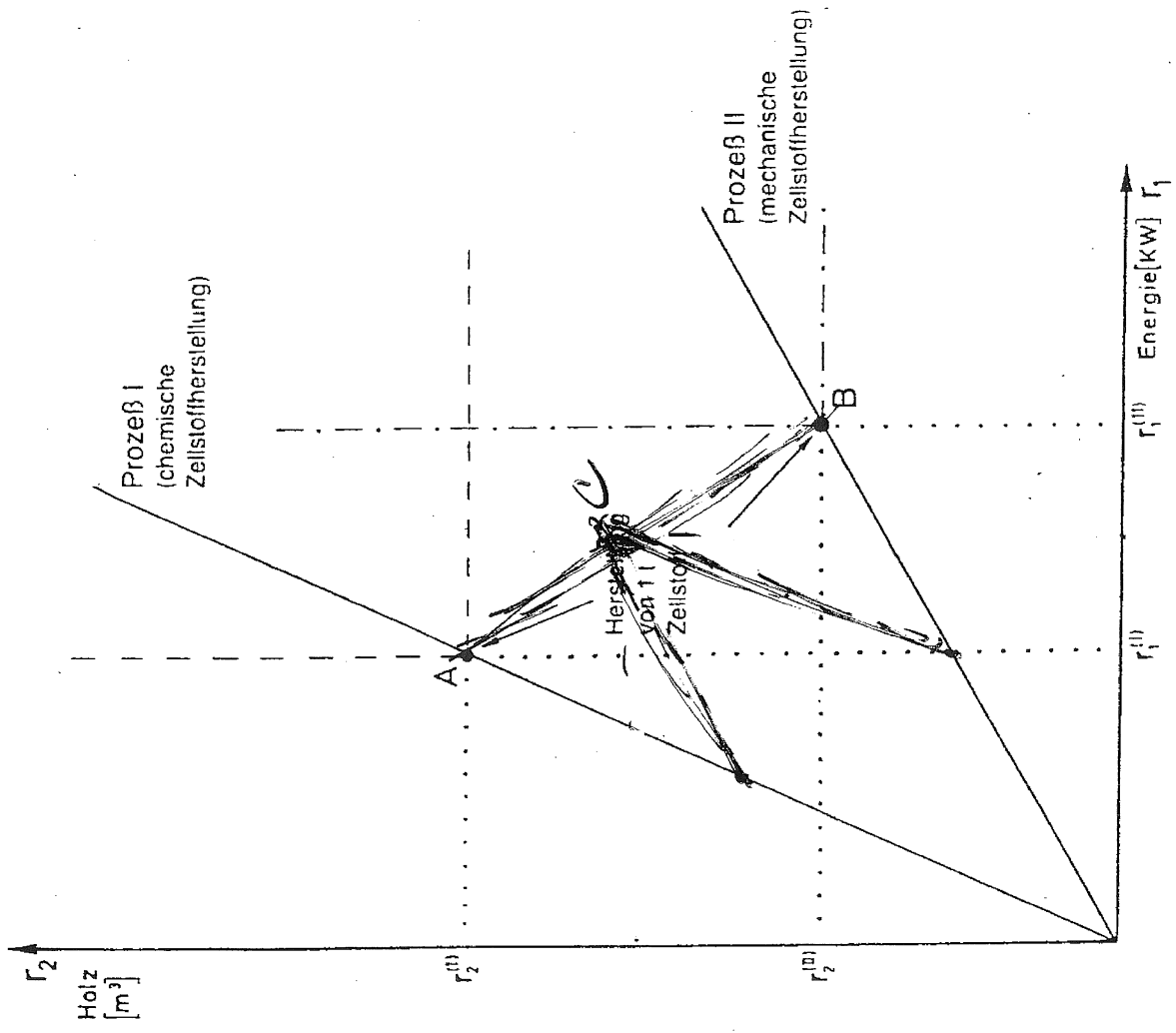


Abb. 21: Substitution von limitationalen Prozessen

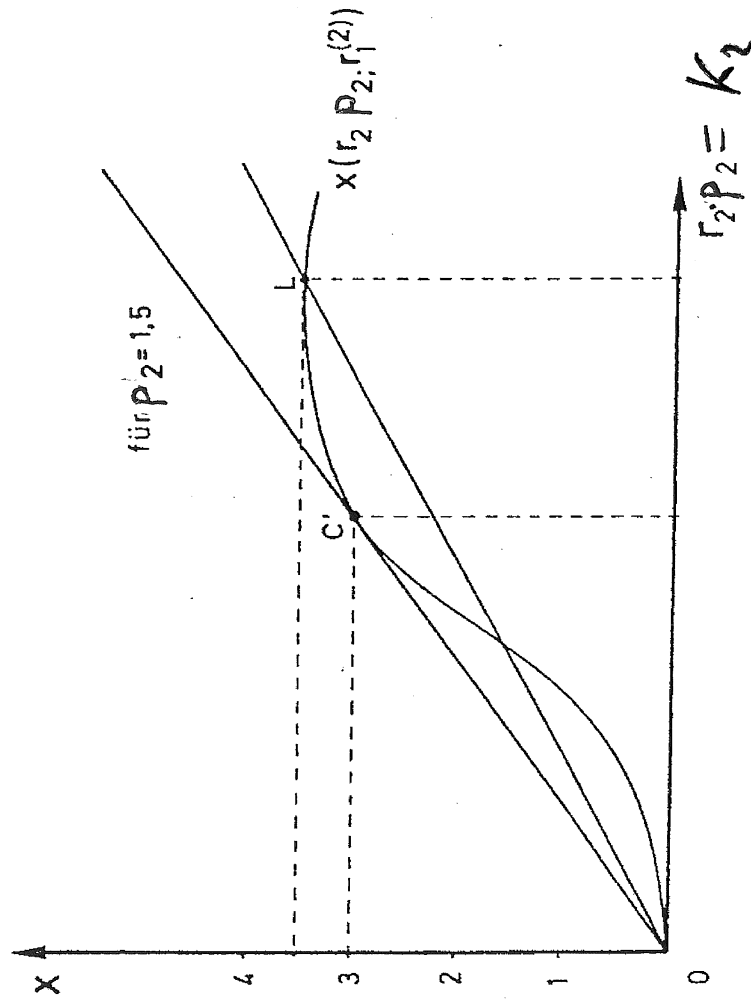


Abb. 39b): Ertragsfunktion in Abhängigkeit von den variablen Kosten

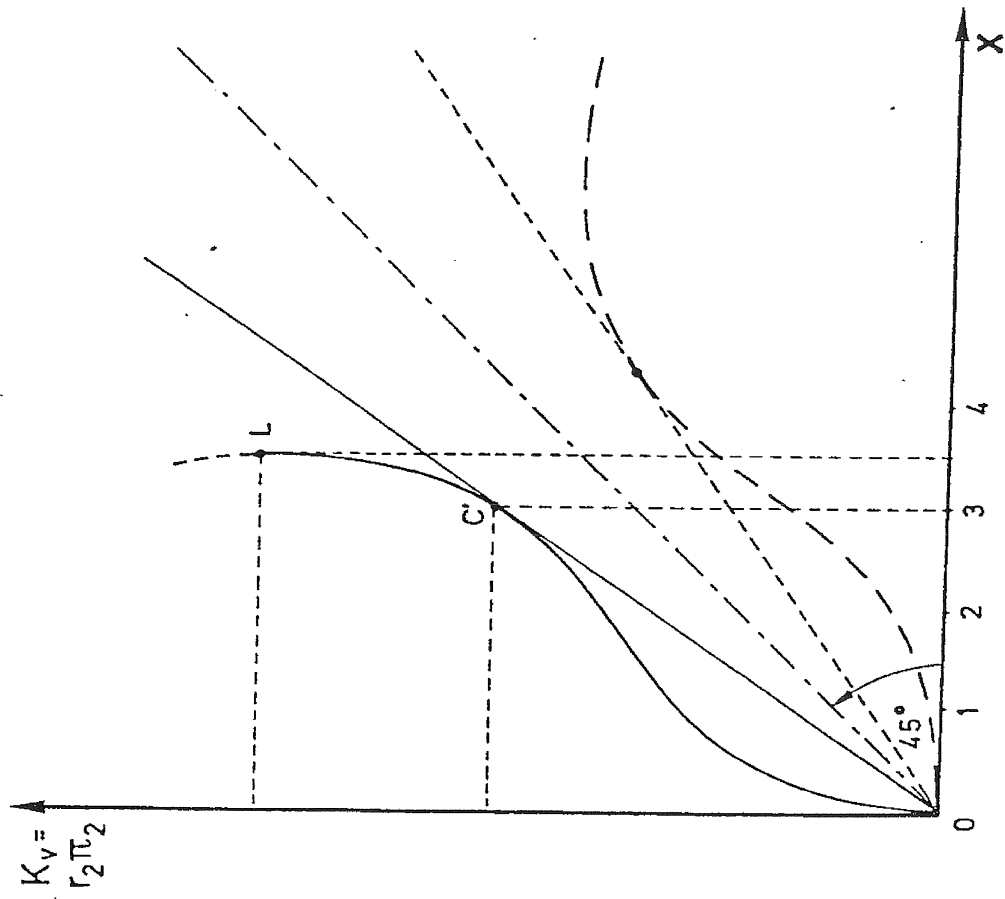


Abb. 39c): Funktion der variablen Kosten