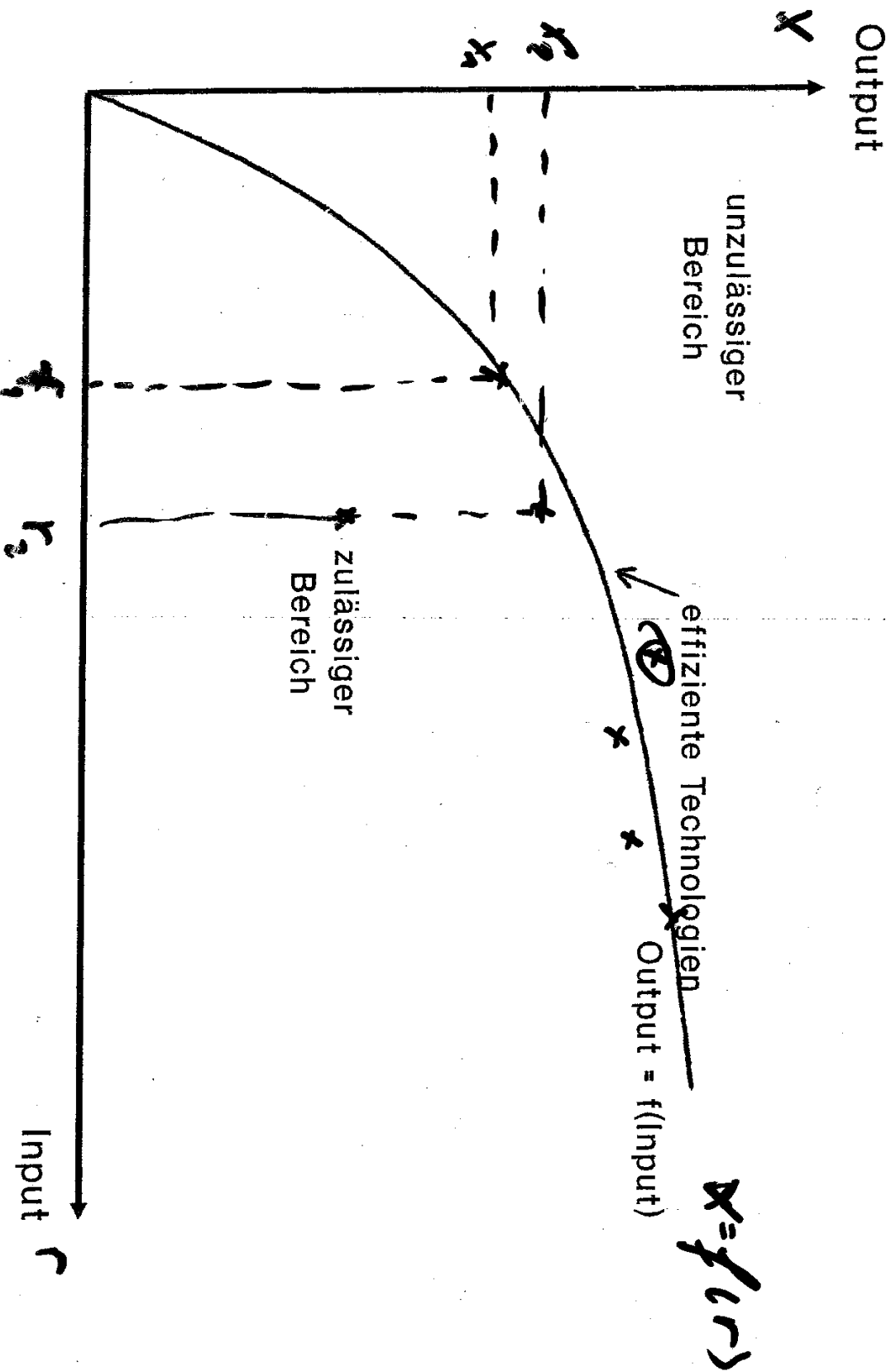
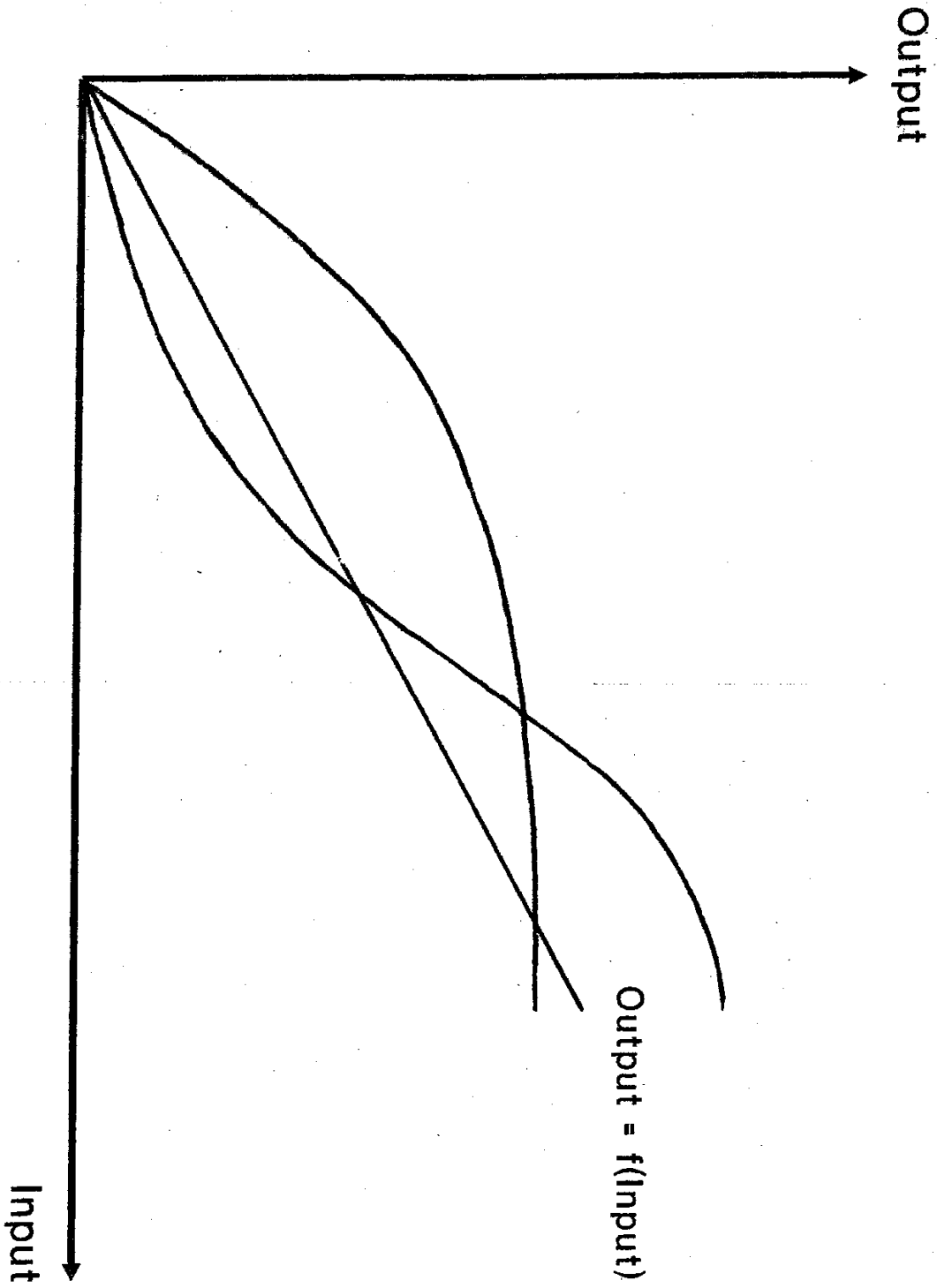


Abbildung 1



[...]



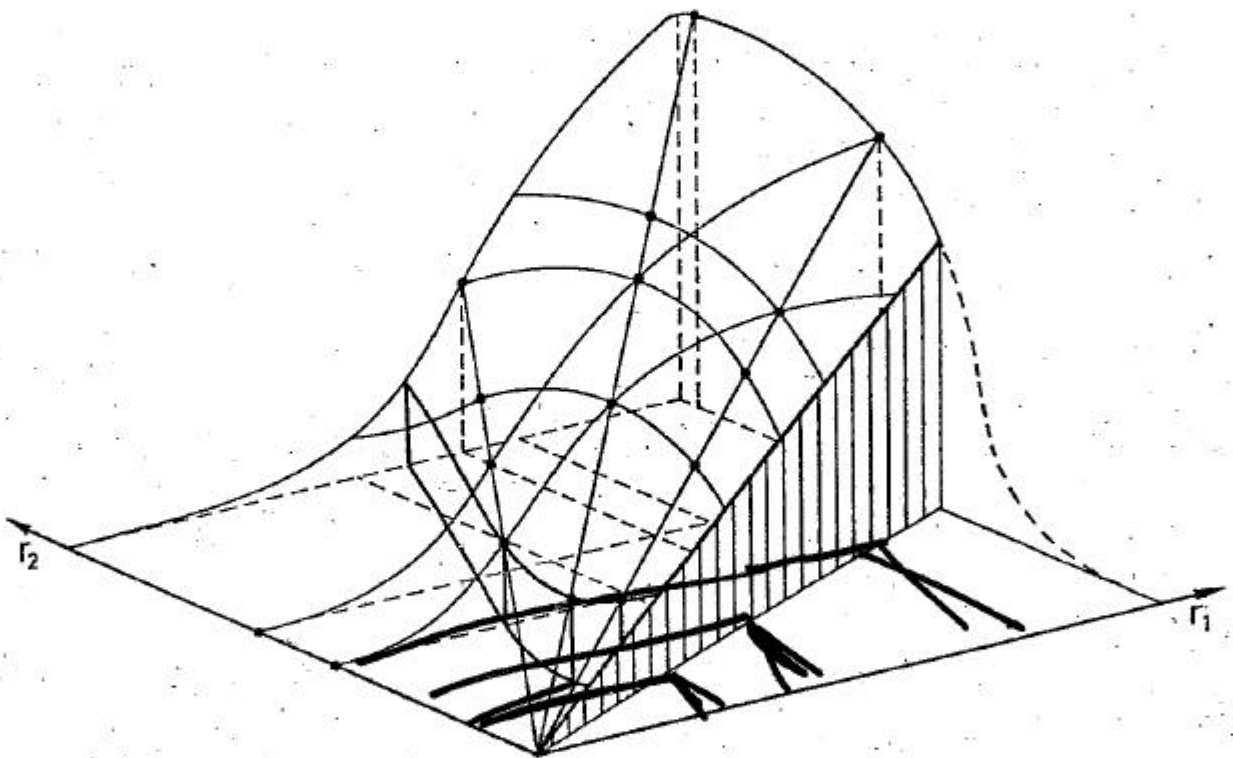


Abb. 35: Ertragsgebirge-Ausschnitt: totale Faktorvariation

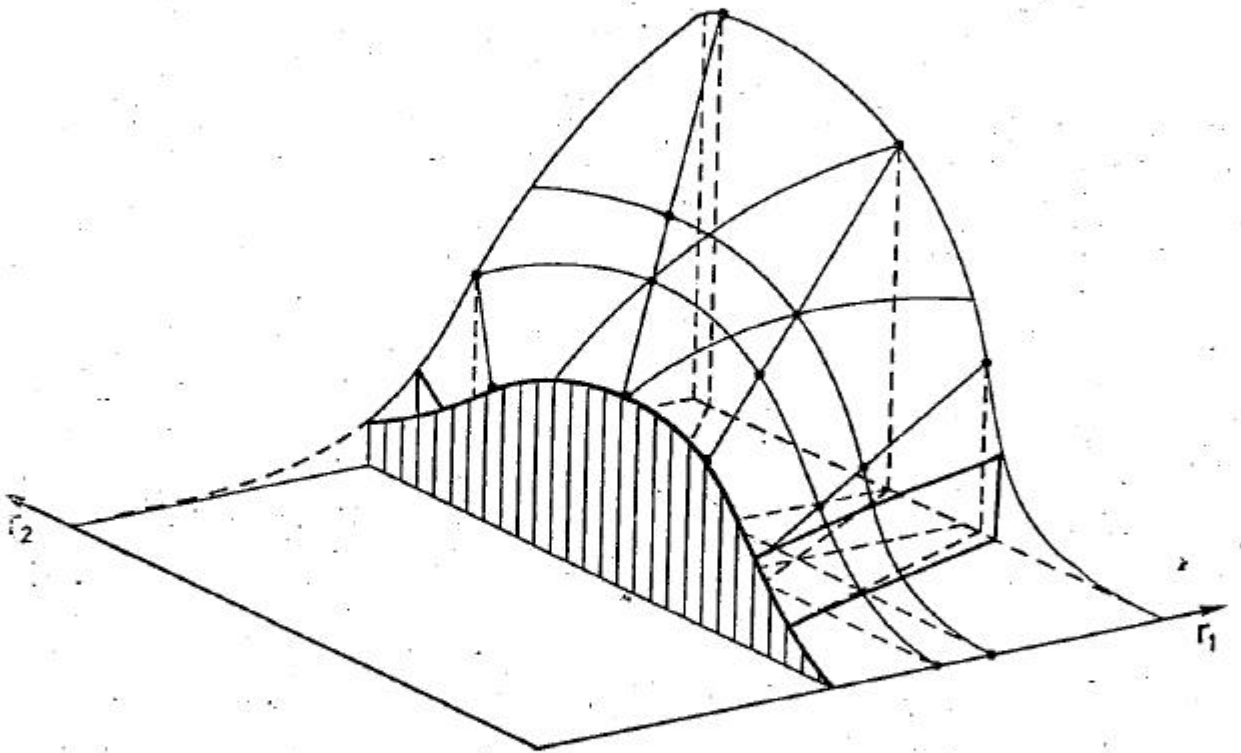


Abb. 34: Ertragsgebirge-Ausschnitt: partielle Faktorvariation

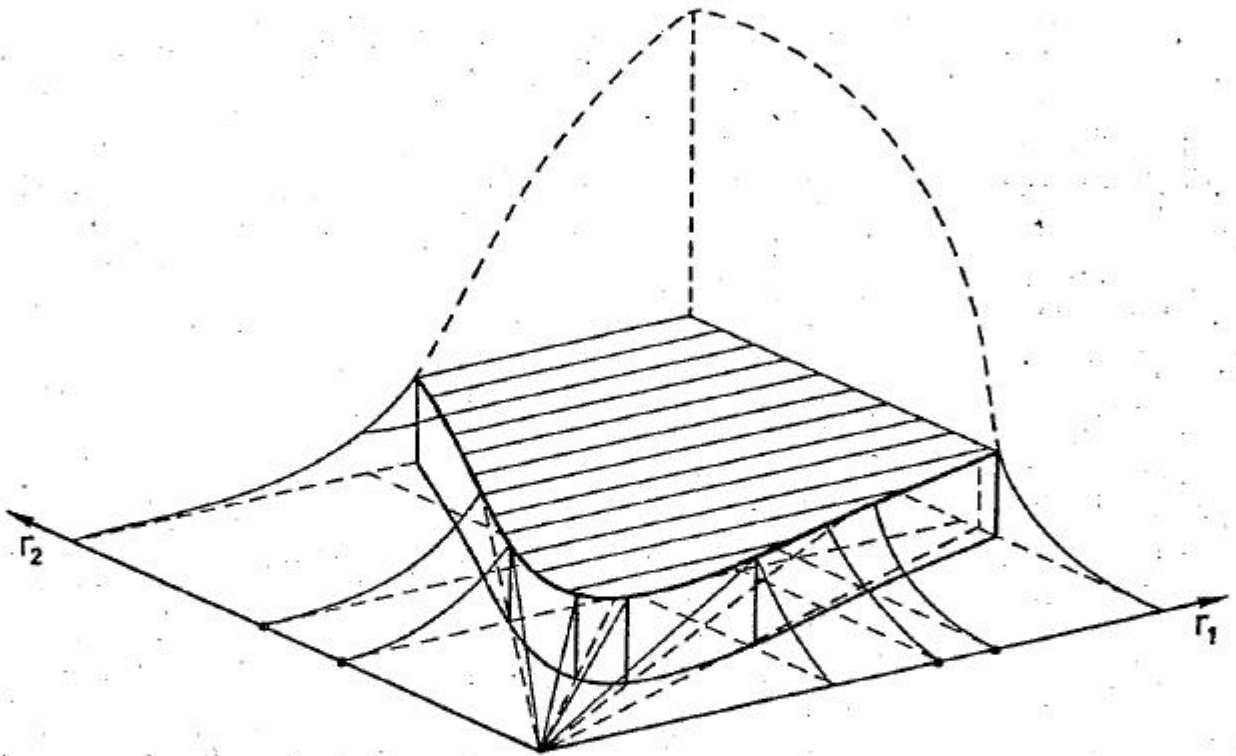


Abb. 36: Ertragsgebirge-Ausschnitt: isoquante Faktorvariation

# FORMEN DER FAKTORVARIATION (FV)

---

1. totale FV
2. partielle FV
3. isoquante FV
4. isokline FV

# ELINGER / HUPF

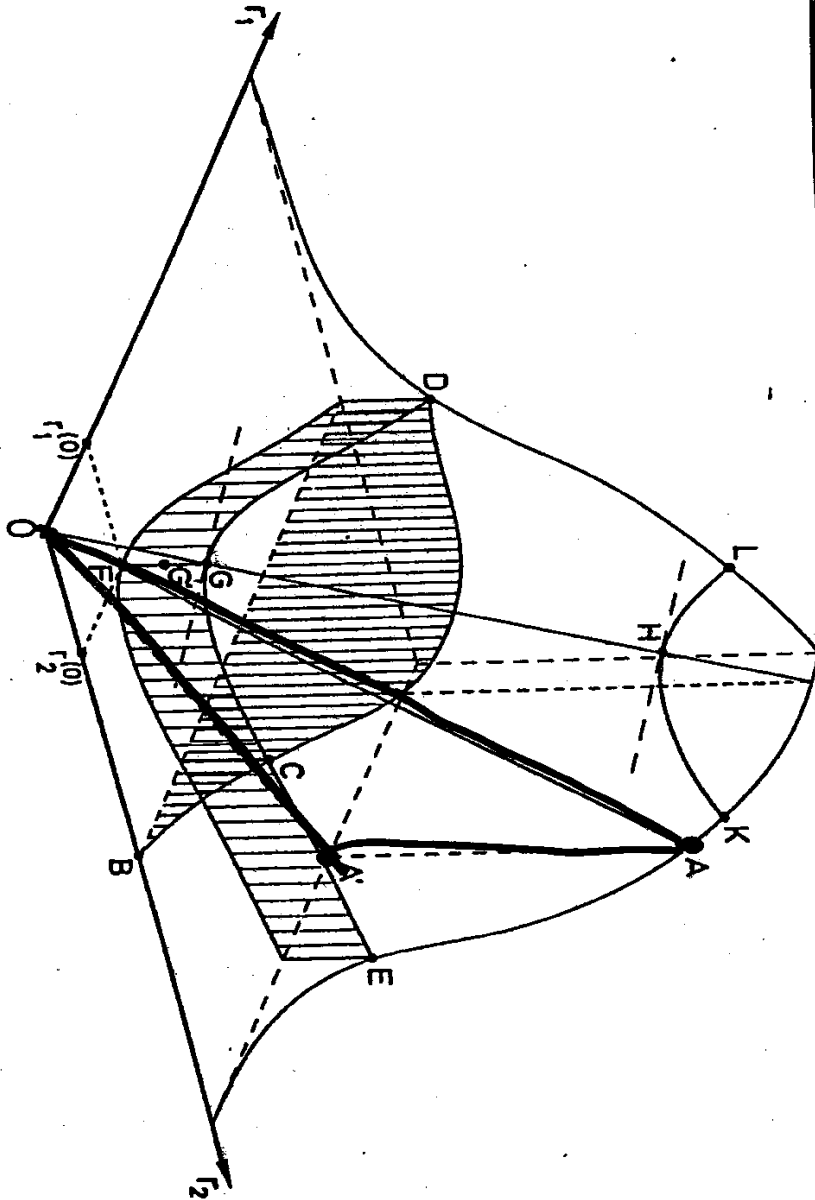


Abb. 2: 3-dimensionale Darstellung der Produktionsfunktion  $x(r_1, r_2)$



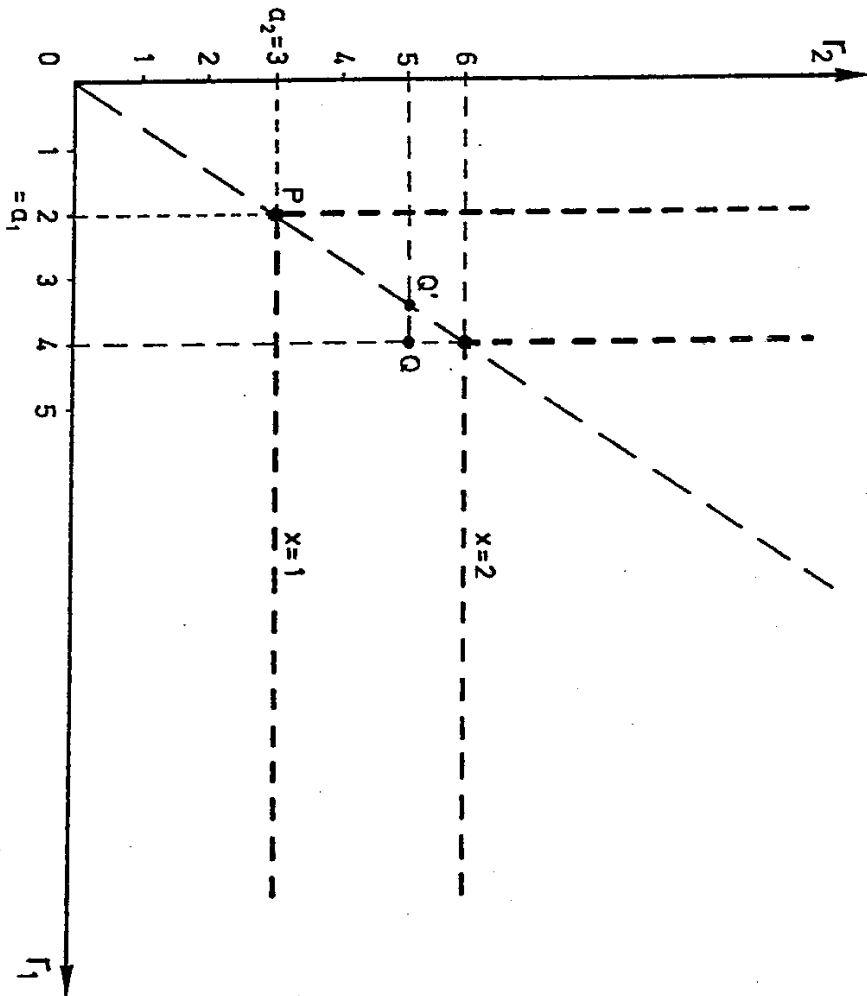


Abb. 15: Lineare Limitationalität

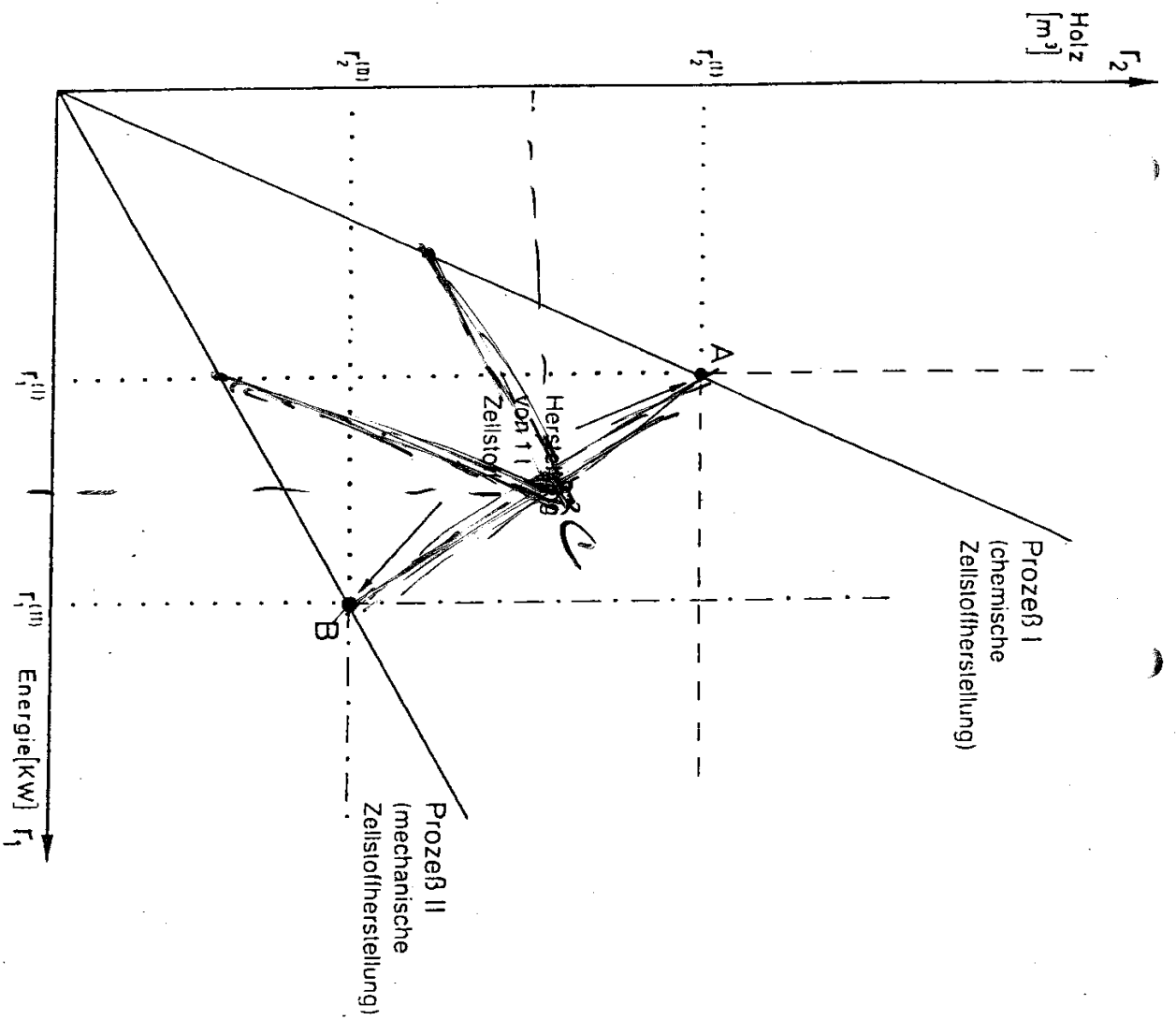


Abb. 21: Substitution von limitationalen Prozessen

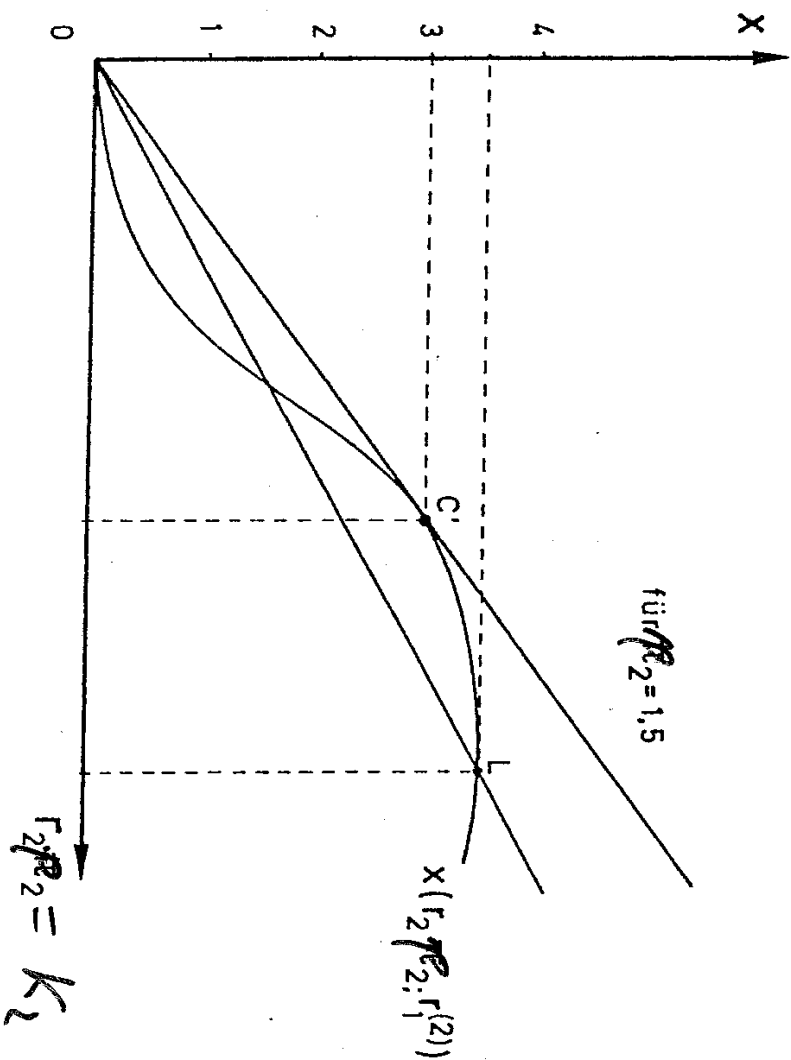


Abb. 39b): Ertragsfunktion in Abhängigkeit von den variablen Kosten

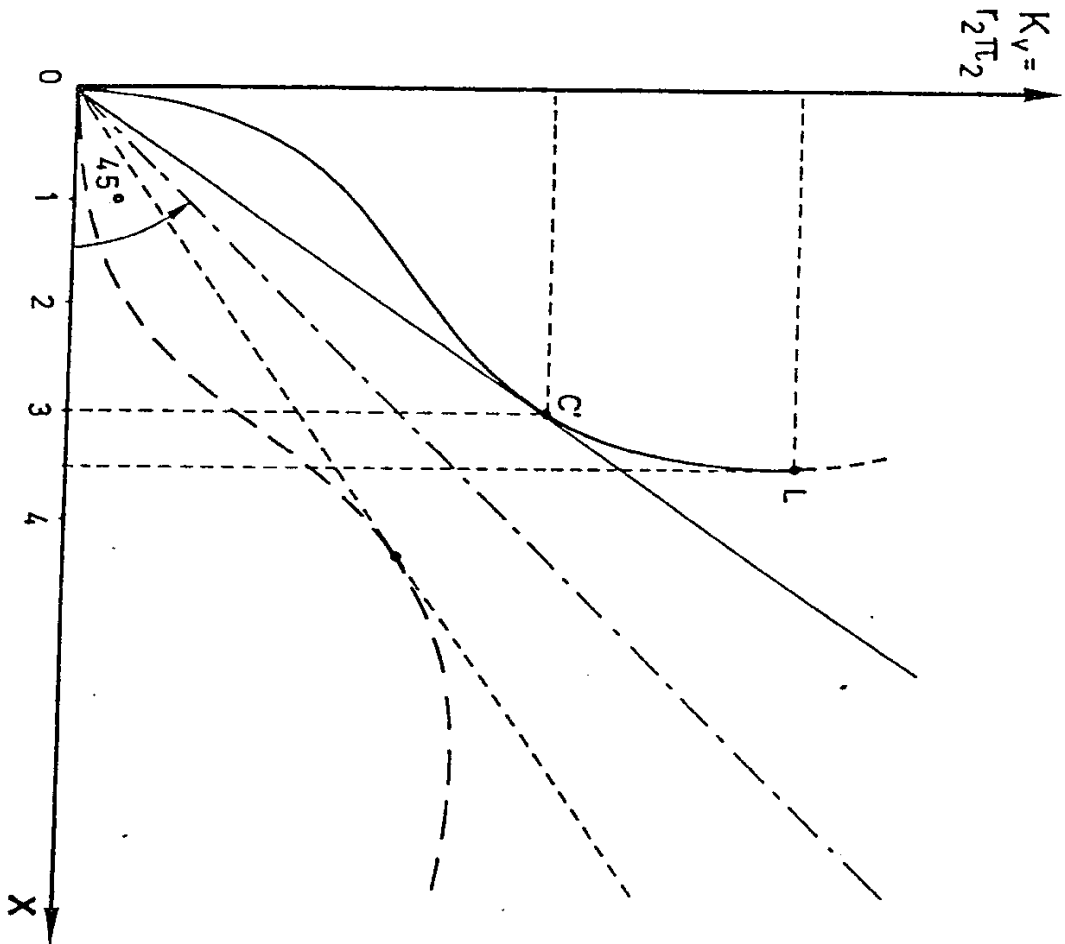
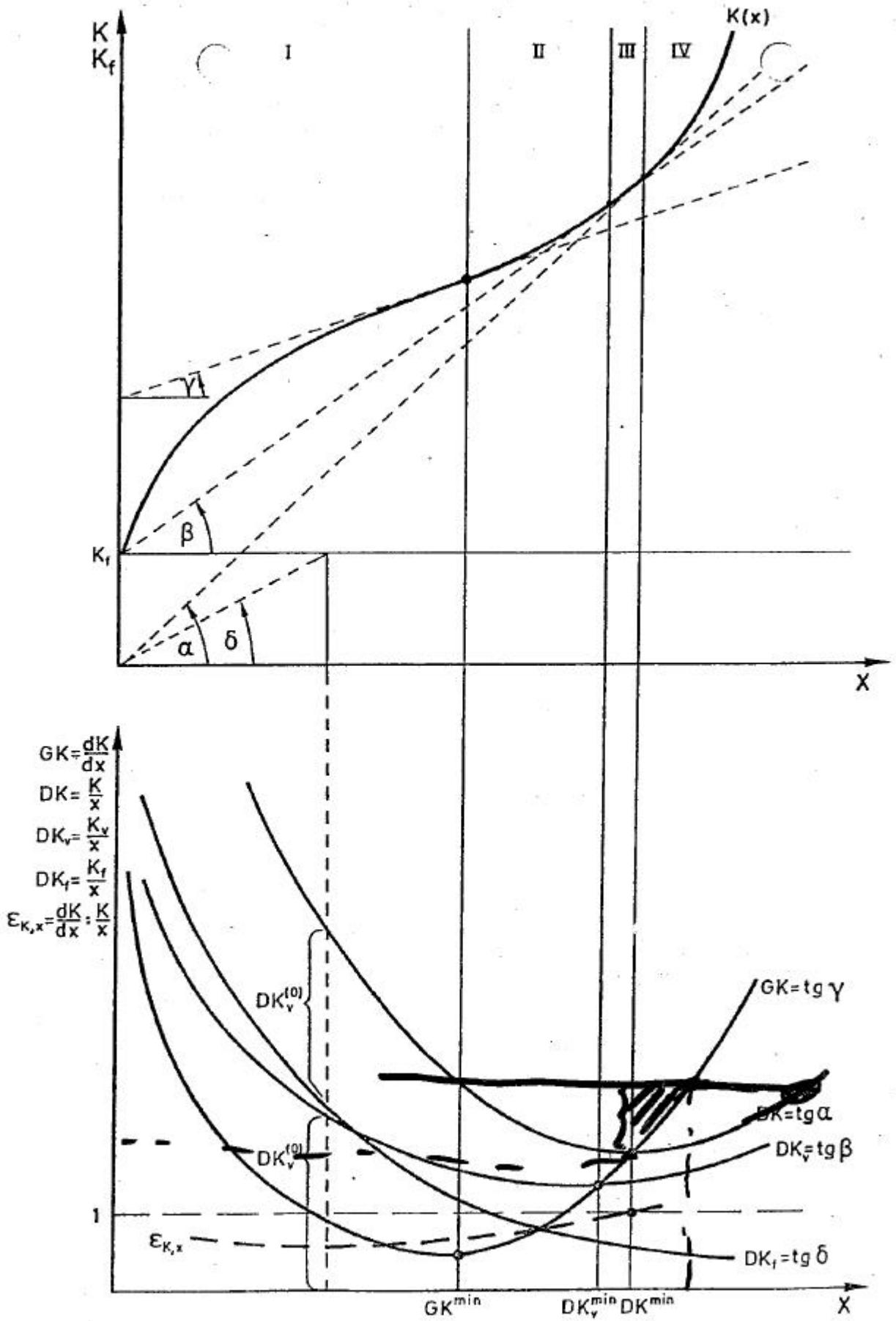


Abb. 39c): Funktion der variablen Kosten



Ahh 40. »Vierphasenschema« der Kostenfunktion

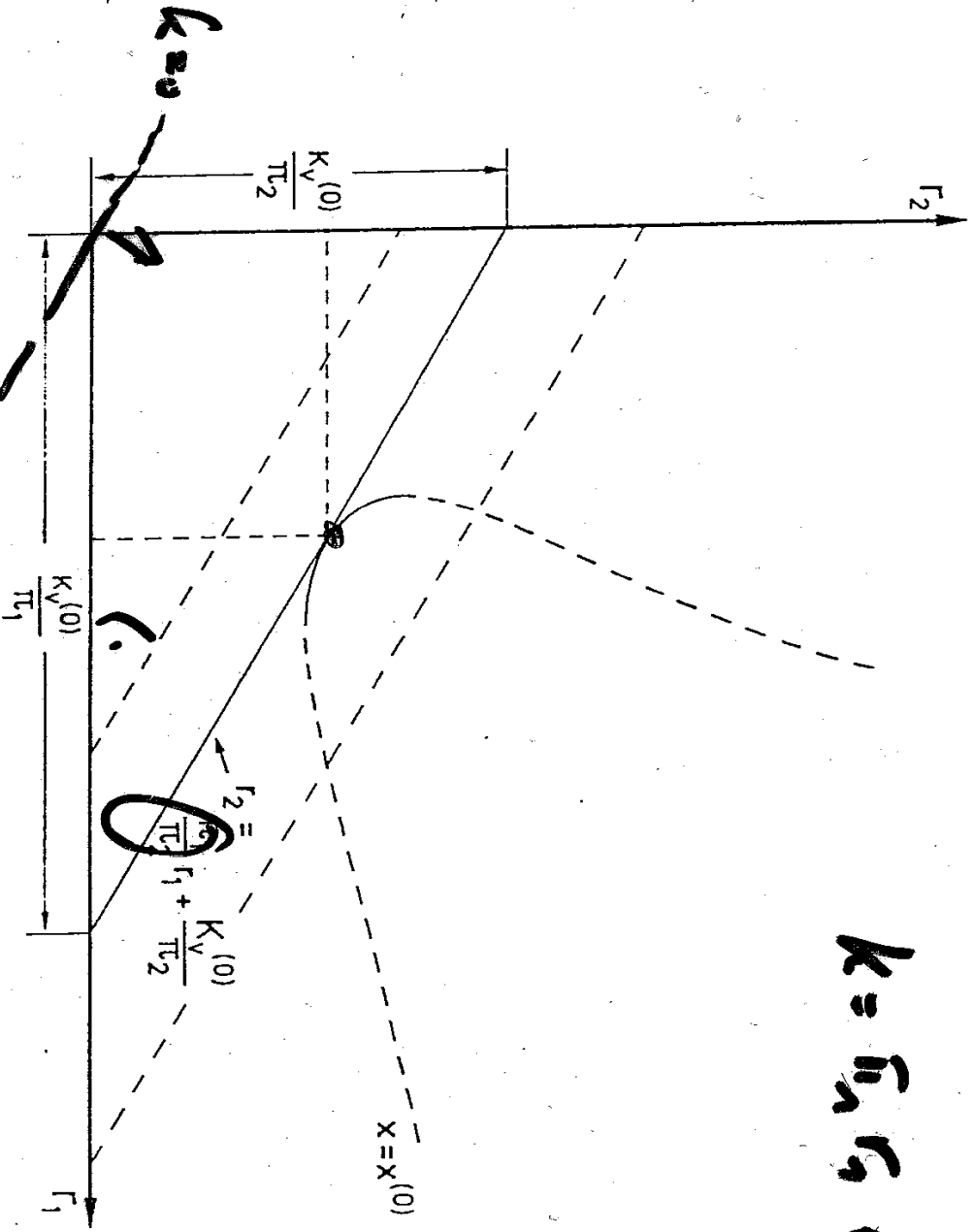
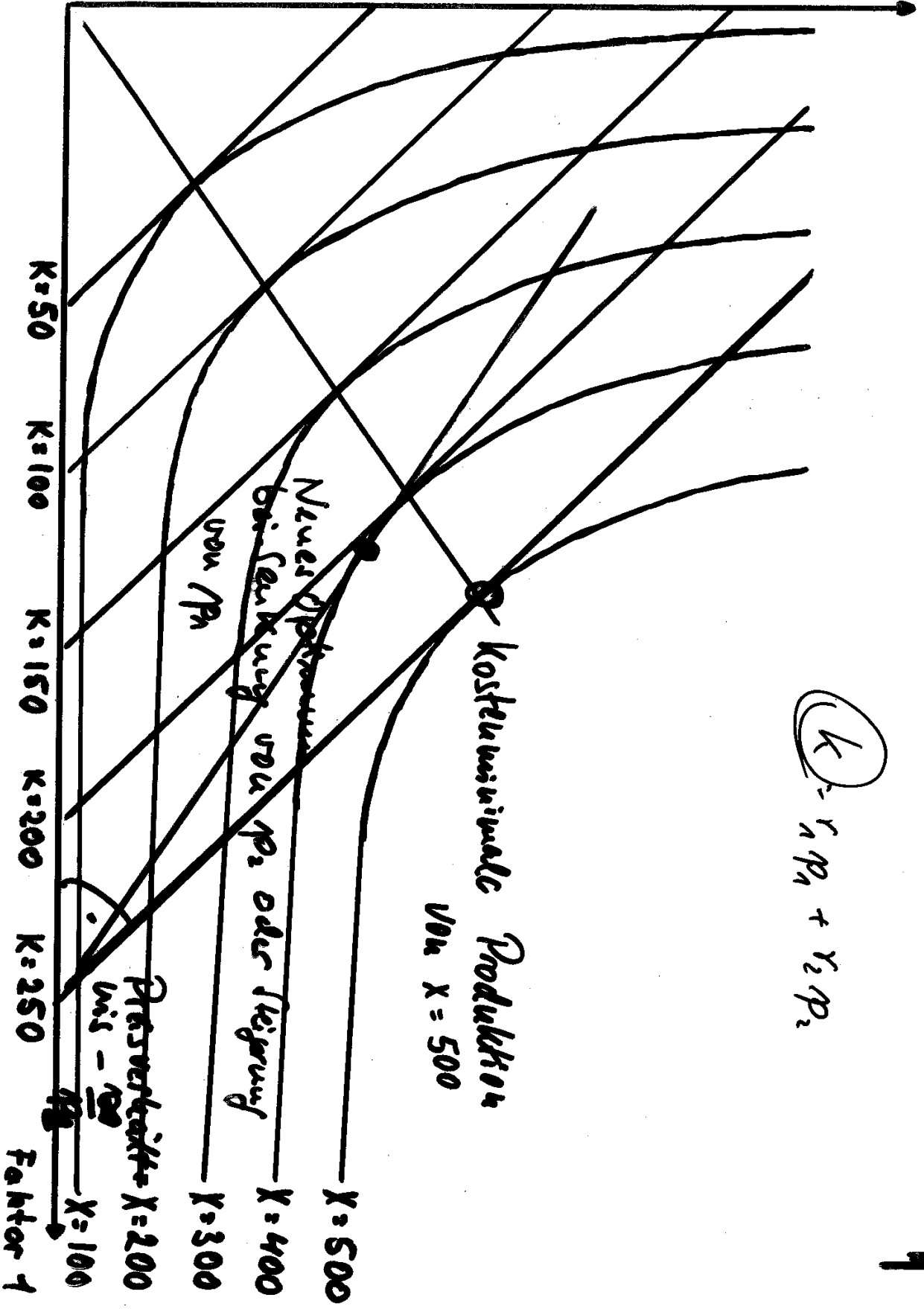


Abb. 41: Bestimmung der Minimalkostenkombination

$$K = \bar{r}_1 r_1 + \bar{r}_2 r_2$$

Faktor 2



$$K = r_1 p_1 + r_2 p_2$$

